

THE LOOK OF LUXURY

Elicyon's design and lifestyle curation services offers clients complete peace of mind

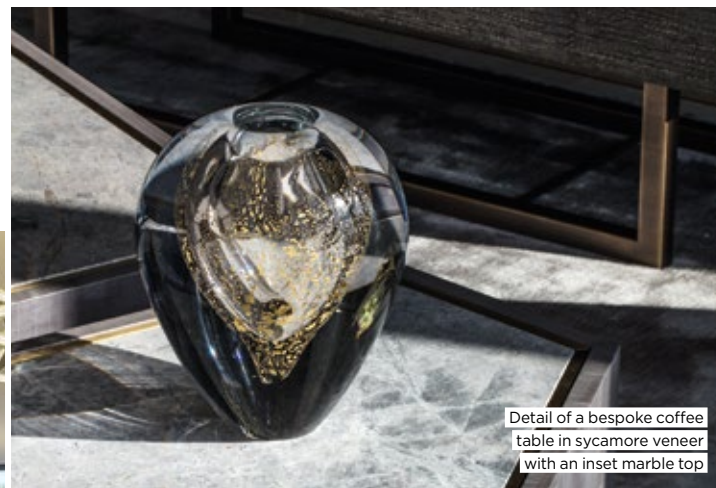
A good interior designer has an eye, but Elicyon has a vision. A personal understanding of clients' passions and style begins the bespoke journey on which Elicyon embarks to create, curate, collect and evolve interiors. The name Elicyon blends the words 'Halcyon' and 'Elysium Fields' - a portmanteau that is right on the mark for a business that creates spaces where time stands still and luxury is considered, purposeful and beautiful.

The creation of bespoke collections for clients is increasingly requested of the Elicyon team who, in recent projects, assisted a client with selecting and curating one of the largest private crystal collections in the world, featuring Lalique and Baccarat. For another project, Elicyon worked with international publishers Assouline and Taschen to curate a collection of books reflective of the client's interest in classic cars.

From a private villa in Kuwait with subtle joinery elements that integrated the family monogram to lighting installations featuring rock crystal, artisan metal work and alabaster, Elicyon sets no limit on luxury. As much as Elicyon works in design, travelling to Basel, Paris and New York to buy art or Italy to choose marble for clients, they also excel



Hand-crafted straw marquetry headboard and bespoke bedside tables in the master bedroom in an apartment at One Hyde Park



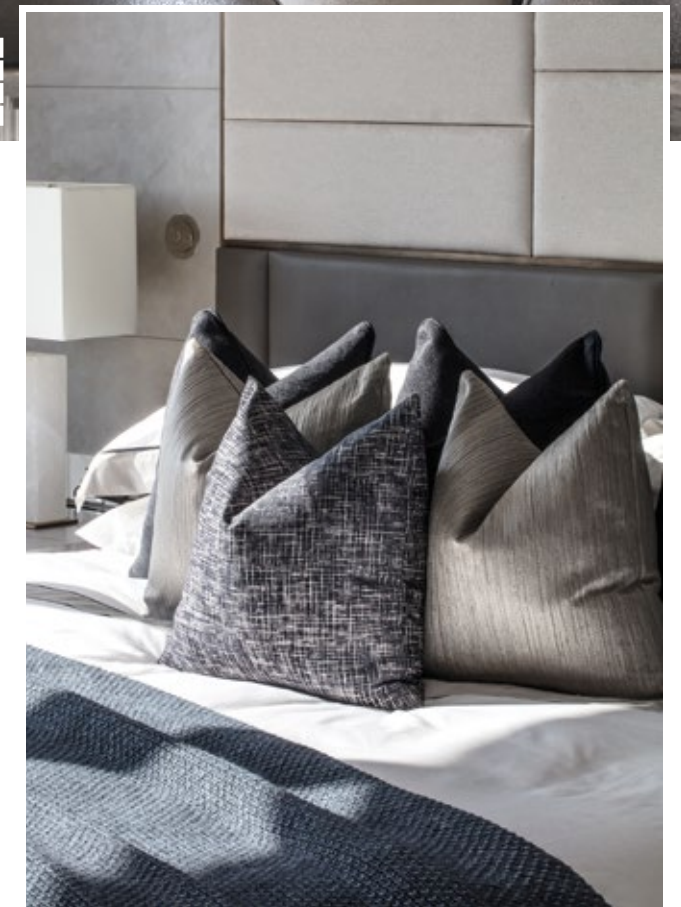
Detail of a bespoke coffee table in sycamore veneer with an inset marble top



Bespoke joinery on left, orbit chandeliers and asymmetric coffee tables in an apartment at One Hyde Park



A recent project in Shanghai where the dining room features a bespoke chandelier and furniture and the bedroom (right) has a fitted headboard with upholstered panels and polished plaster sections on each side



in lifestyle curation. A creation can be beautiful, but it must also align with the client's lifestyle: fridges are stocked with favourite delicacies, linen and tableware are assembled and bespoke cool cabinets are made to hold preferred champagnes. Be it unpacking belongings or dressing homes for Christmas and composing floral strategies for special occasions, a project never ends in the eyes of Elicyon.

Founder and interior designer, Charu Gandhi, is involved in all Elicyon's projects, sharing her functional approach to design that never misses an opportunity for drama and is plugged in to current trends. One trend she sees on the rise is the use of florals to complement interiors, in a similar capacity to fine art in homes. The use of natural materials and unusual artisan techniques, including timbers, textural fabrics and straw marquetry, are also likely to have influence. Playful trims and fringes, bringing a soft and light-hearted feel to pieces, are also championed by the Elicyon team, alongside a focus on transparency with exquisite sheer window dressings referencing Vogue's trend for see-through handbags that reveal neatly curated interiors.

Elicyon's work is as considered, detailed and distinctive as each request a client makes, paving the way to luxury living.

elicyon.com