

News · 4th Jan 2021

Covers come off £90m hotel-to-resi scheme in Knightsbridge

41-43 Beaufort Gardens is one of the most exclusive luxury developments to launch in Prime Central London this year, say agents...



We're less than a week into 2021, but a new hotel-to-resi scheme in Knightsbridge has been heralded as one of the most exclusive luxury development launches in Prime Central London this year.

The transformation of the former Parkes Hotel on Beaufort Gardens – just around the corner from Harrods – has been in the works for the last 24 months, and the team has now lifted the lid on the finished article.

The trio of 19th century Italianate townhouses at Nos. 41-43 have been transformed into nine apartments with layouts and spec by the in-demand Parisian designer Pierre Yovanovitch, who has form in delivering projects for the likes of Pierre Cardin, Hermès, Christian Louboutin and the Hotel Marignan.

Developers Felix Giorgetti and Aerium also worked with architects Axis, and Charu Gandhi of interior design studio Elicyon, on the £91m scheme, which has been kitted out with a residents-only health spa featuring a gymnasium, treatment room and sauna.

Elicyon has been tasked with dressing the show apartments, and took inspiration from the lavish townhouses of Madrid, Rome and Paris – along with Knightsbridge's origins as a guarded crossing over the "lost" Westbourne River.



Share this article:



Add to Favourites

Save to PDF

In this article:

LOCATIONS

Knightsbridge
London
Prime Central London

HERITAGE

Properties

Trending

MOST READ EDITOR'S CHOICE LATEST

01

'Britain's Most Expensive Houses': Sotheby's Realty stars in Ch4's new property show

If Richard Curtis made *Selling Sunset*...

Properties · 23rd Dec 2020

02

Covers come off £90m hotel-to-resi scheme in Knightsbridge

41-43 Beaufort Gardens is one of the most exclusive...

Properties · 4th Jan 2021

03

Deal Review 2020: 22 notable property sales from an extraordinary year

In spite of the most challenging conditions in living...

Properties · 23rd Dec 2020



High ceilings, huge windows and original features provided an ideal canvas for the design team, and the super-prime spec includes kitchens by Design Space and Modulnova, underfloor heating, parquet flooring, Lutron lighting systems, and bathrooms decked out in White Ariston marble.

Units start at £2.45m and range all the way up to £25m, with the largest weighing in at over 4,000 square feet. Harrods Estates and Beauchamp Estates are on sales.



04

Knight Frank loses star broker Daggers

High-profile super-prime team head Daniel Daggers is...

Business & People - 25th Nov 2019

05

RBKC address named 'most expensive road of the decade'

Sold prices in The Boltons averaged...

The Market - 4th Jan 2021



MARKET DASHBOARDS



Select Language
 Powered by Google Translate



You can almost peer into Harrods from the penthouse's roof terrace

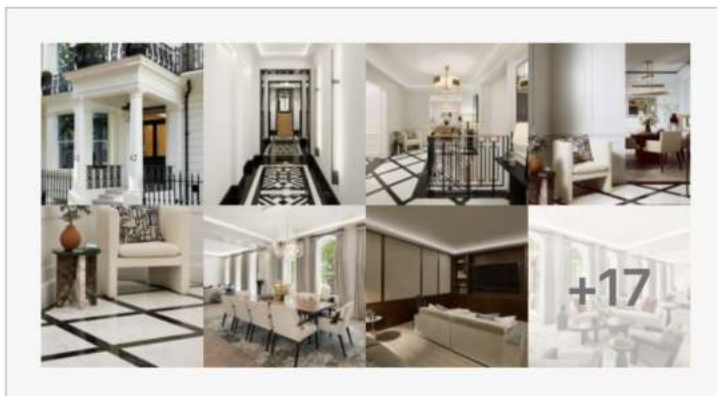
Charu Gandhi, Founder & Director of Elicyon: "Inspired by the etymology of Knightsbridge and the "lost" Westbourne River, the show apartments at Beaufort Gardens have a design signature focused around ink blue details in the colour palette and finishes that emulate the ebb and flow of water. We have dressed the lofty living spaces with sculptural furniture pieces and abstract artworks whilst ensuring that the quality of the spaces speak for themselves."

Jeremy Gee, Managing Director of Beauchamp Estates: "Located in the heart of Knightsbridge the elegant apartments at 41-43 Beaufort Gardens have been designed through a special collaboration with globally renowned Paris based designer Pierre Yovanovitch. With show apartments dressed by Charu Gandhi of design studio Elicyon, the newly launched apartments are available for immediate occupation and provide discerning buyers a not-to-be-repeated opportunity to buy a slice of Knightsbridge history and new homes offering the very best specification and craftsmanship."

Simon Barry, Head of New Developments at Harrods Estates: "Situated on the doorstep of Harrods, the world's most prestigious department store, 41-43 Beaufort Gardens is one of the most exclusive luxury development launches in Prime Central London this year. Behind the heritage façade, the interiors of a former boutique hotel have been completely redeveloped to provide a new collection of unique trophy apartments whose large floorplates have the benefit of being arranged across three Knightsbridge townhouses."

The boutique Parkes Hotel was in operation from 1966 to 2008, before the buildings were sold off for redevelopment in 2013.

IN PICTURES: 41-43 BEAUFORT GARDENS, KNIGHTSBRIDGE [Harrods Estates](#) and [Beauchamp Estates](#)





written by
PrimeResi Editor
The Journal of Luxury Property
✉ editor@primeresi.com

RELATED ARTICLES



Deal Review 2020: 22 notable...
23rd Dec 2020 · PrimeResi Editor
In spite of the most challenging conditions in...



Green light for the West End's...
23rd Dec 2020 · PrimeResi Journal
Grosvenor Britain & Ireland has secured planning...



'Britain's Most Expensive Houses'...
23rd Dec 2020 · PrimeResi Journal
There were some raised eyebrows when it emerged...



Behind the Schemes: Designing a...
23rd Dec 2020 · PrimeResi
The flight to the country proved one of the big...



Do you have a news story or tip for PrimeResi?
Click here to tell us all about it!

Contact

For editorial suggestions or queries, please email:

✉ editor@primeresi.com

For subscription enquiries or queries, please email:

✉ subscriptions@primeresi.com

Quick links

About PrimeResi
Contact Us
Latest Articles

Contributors
Yearbook

Membership options

Individual
Memberships

Corporate
Memberships

